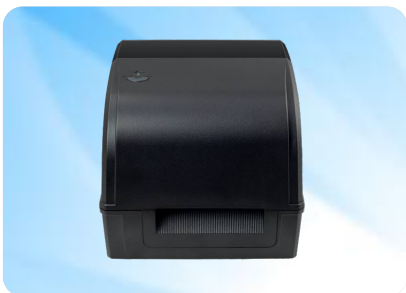


Thermal Transfer / Direct Thermal

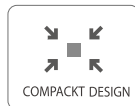
## XP-TT426B

- Equipped dual motor
- Print speed up to 127mm/s
- Ribbon roll capacity 300m,  
25.4mm Ribbon Roller (Outer roll ribbon)
- Supporting TSPL-EZ printer language,  
Eltron and Zebra commands
- Large visual windows



# XP-TT426B

Thermal Transfer / Direct Thermal



Printer Model	XP-TT426B
Resolution	200 DPI
Printing method	Thermal Transfer / Direct Thermal
Max.print speed(Max.)	127 mm (5") / s
Max.print width(Max.)	108 mm (4.25")
Max.print length(Max.)	1778 mm (70")
Media type	Continuous, gap, black mark, fan-fold and punched hole
Media width	25.4-118mm (1.0"~4.6")
Media thickness	0.06~0.254 mm(2.36~10mil)
Label length	10 ~ 1778 mm(0.39" ~ 70" )
Label roll capacity	127 mm (5") external diameter
Ribbon & Ribbon width	300m, Max roll diameter 67mm, Core Diameter: 1", 40mm~110mm (1"~4.3")
Enclosure	ABS plastic
Dimension	299 x 235 x 198.3 mm
Weight	2.57 kg
Processor	32 bit RISC CPU
Memory	5MB Flash Memory 8MB SDRAM Micro TF card reader for Flash memory expansion, up to 4GB
Interface	USB 2.0(Standard)/ Serial(Optional)/ WIFI(Optional)/ Bluetooth(Optional) / Ethernet(Optional)
Power supply	Built-in power supply with auto switching Input: AC 100-240V,1.8A, 50-60Hz Output: DC 24V, 2.5A, 60W
Operation switch, button, LED	1 power switch, 1 feed button, 1 LED (3 colors: red, purple, blue)
Sensors type	Transmissive gap sensor ( position adjustable) Black mark reflective sensor ( position adjustable) Ribbon end sensor Print head open sensor
Real time clock	Standard
Internal fonts	8 alpha-numeric bitmap fonts Windows fonts are downloadable from software.
Barcodes	<b>1D bar code:</b> Code 39, Code 93, Code 128UCC, Code 128 subsets A, B, C, Codabar, Interleaved 2 of 5, EAN-8,EAN-13 EAN-128, UPC-A, UPC-E, EAN and UPC 2(5) digits add-on, MSI, PLESSEY, POSTNET, China POST, GS1 DataBar, Code 11 <b>2D bar code:</b> PDF-417, Maxicode, DataMatrix, QR code, Aztec
Graphics	BIMAP, BMP, PCX(Max. 256 colors)
Font and barcode rotation	0°, 90°, 180°, 270°
Printer language	TSPL, EPL, ZPL, DPL
Environment condition	Operation temperature: 5°C-40°C (41°F-104°F) , Humidity (non-condensing): 25%-85% Storage: -40°C-60°C(-40°C-140°C), Humidity (non-condensing): 10%-90%
Safety regulation	FCC, CE, CCC, CB
Environmental concern	RoHS
Standard accessories	①Windows labeling software, driver and user manual Cd ②quick start guide ③USB cable ④power cord ⑤external switching power adapter ⑥label spindle, fixing tab x 2 ⑦Ribbon spindle x 2 ⑧Ribbon paper core
Factory Options	①Ethernet(10/100 Mbps); ②RS-232C(2400-115200 bps)
Dealer options	① Label peel-off module; ② Cutter module(full/partial), paper thickness 0.06-0.19mm, 500000 cuts; 0.20-0.25mm, 200000 cuts
User options	① External roll mount (1"core) ② Bluetooth module(RS-232C interface) ③ WIFI module ④ external roll mount board



Scan QR code to checkout Xprinter website for more update information.  
Phone: (+86 756) 3895 852  
Http://www.xprintertech.com  
Email: overseas@xprinter.net

